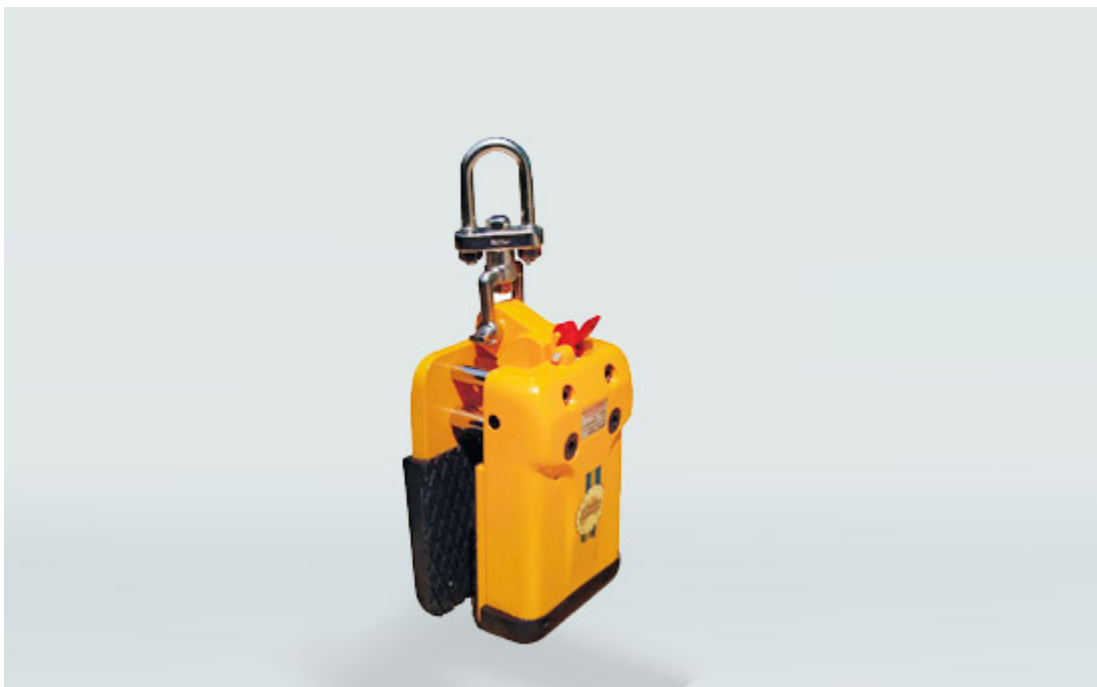


**STONE EQUIPMENT**

# ABACO Little Giant slab lifter

Stone slab lifter with compact design

Safe and compact design will help solve problems where head room is an issue. Ideal for the easy extraction from tight piles of slabs.

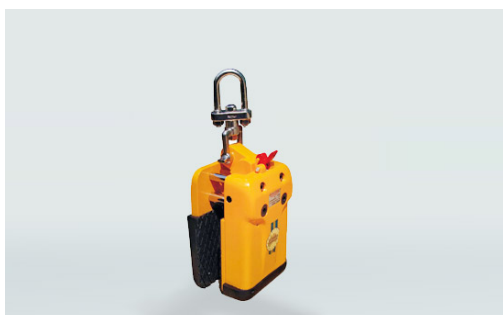


## Features



### SWIVEL SHACKLE

Swivel shackle included.



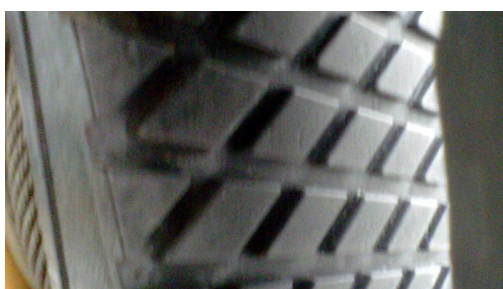
### GRIP RANGE

Available with grip range: 15-50 mm or 30-75 mm.



### COMPACT DESIGN

The compact design allows the lifting of slabs tightly packed on racks or inside containers.



### VULCANIZED RUBBER

Vulcanized rubber jaws black or white to prevent scratching and damages to lifted pieces.



#### CLAMPING

Proven “clamping principle” preventing slabs from slipping, snapping, cracking or breaking. The movement “couple” distributes pressure evenly on both plates of the clamp during lifting.

## Advantages

Original slab lifter Abaco Little Giant:

- **Compact and sturdy**, it allows to safely move stone slabs;
- Available with **black or white vulcanized rubber**;
- **Two different sizes** depending on the thickness of the slabs to lift.

## Technical details

	<b>ABACO LG 50</b>	<b>ABACO LG 75</b>
Grip range	15-50 mm	30-75 mm
Loading capacity	1000 Kg	1000 Kg
Weight	22 kg	27,5 Kg

## Related products



Sky Rider slab lifter



Slab trolley SC500 and SC800

## Achilli tailor made

**TAILORED ACHILLI MACHINES  
CONTACT US FOR DETAILS**

**REQUEST CUSTOMIZATION**

## Always at your disposal. Contact us.

Do you need information about Achilli products? Contact us for technical or commercial information on floor grinders, bench saws and bridge saws.



+39 0541 387066



+39 0541 389058



info@achilli.com

**REQUEST INFORMATION**

## I nostri canali social

Elit ea duis sunt do esse cillum dolore ipsum ut est eu quis ipsum. Consectetur enim deserunt elit in exercitation ipsum sunt veniam eu commodo cupidatat. Id nostrud esse eu eiusmod sunt ipsum ipsum in adipiscing adipiscing deserunt



Facebook



LinkedIn



Youtube